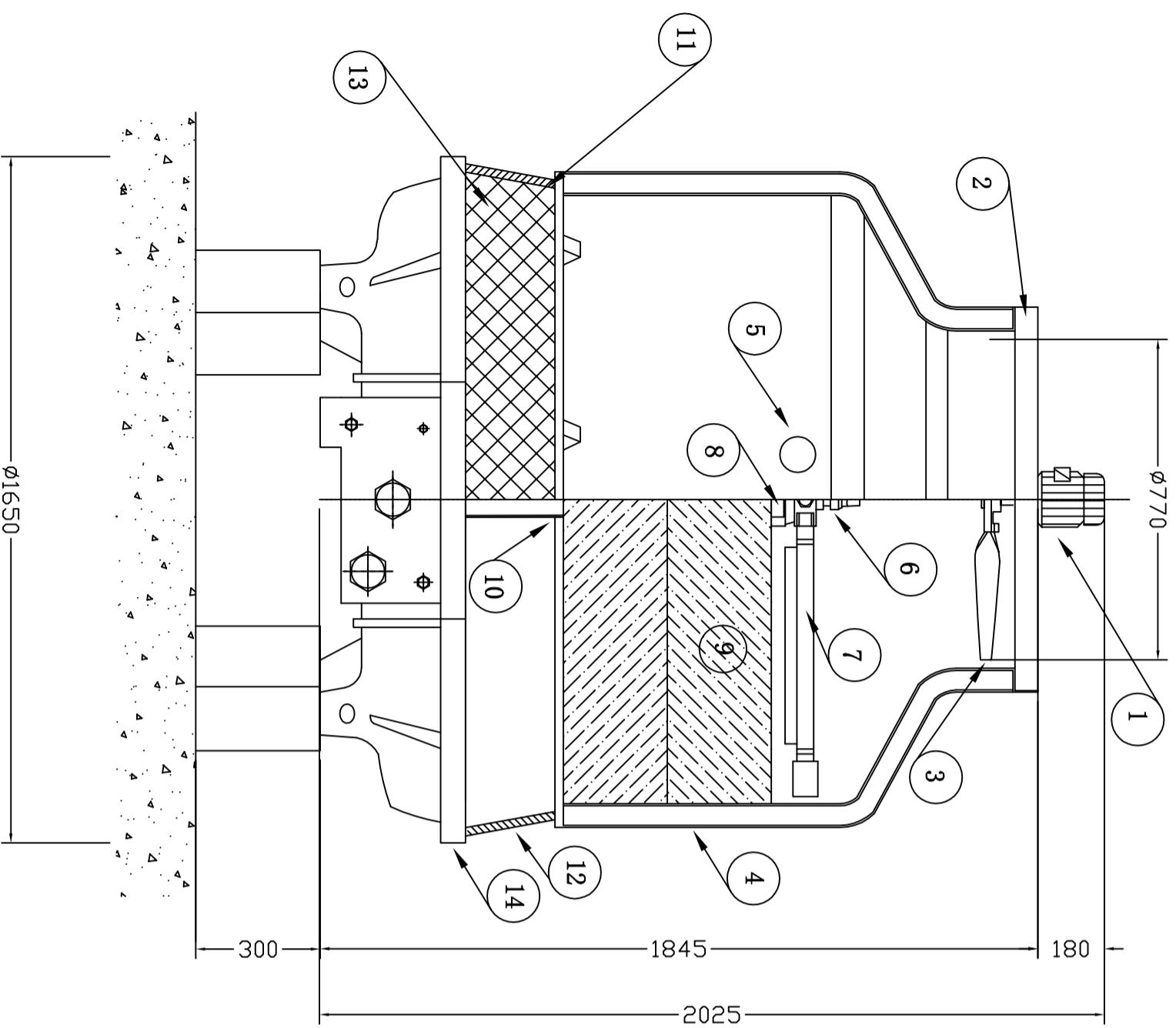


Item	Description	Material	Specification	Qty
1	Fan Motor		1.0HPx6P	1 pc
2	Motor Frame Ass'y	H.D.G.S.		1 pc
3	Fan	ABS	770mm	1 set
4	Casing	F.R.P.		2 pcs
5	Hand Hole			1 pc
6	Sprinkler Head	Nylon	080	1 pc
7	Sprinkler Pipe	P.E.		4 pcs
8	Stand Pipe	P.V.C.		1 pc
9	Filling	P.V.C.		1 set
10	Stopper or Column	P.P.		1 set
11	Filling Supportor	H.D.G.S.		1 set
12	Casing Supportor	Nylon		3 pc
13	Inlet Louver	P.V.C.		1 set
14	Water Basin	F.R.P.		1 pc



REMARKS H. D. G. S : HOT DIP GALVANIZED STEEL

Drain	25A (1 B)	Over Flow	25A (1 B)
Outlet	80A (3 B)	Quick Filler	15A(1/2B)
Inlet	80A (3 B)	Automatic Filler	15A(1/2B)

Pipe Connections

Dry Weight	116 kgs	Operating Weight	530 kgs
------------	---------	------------------	---------

Loading Data

Ambient Wetbulb	28° C	Air Volume	270 M ³ /MIN
Outlet Water Temp	32° C	Water Flow	390 L/MIN
Inlet Water Temp	37° C	Cooling Load	117000 KCAL/HR

Design Condition

DATE	12.02.20	DWG NO.	ART-30-0L	REV NO	ART-30-0L-00
MODEL	ART-30	DRAWN BY	ZHAO RH	CHECKED BY	LINDA LIU
DWG TITLE	COOLING TOWER ASS'Y DRAWING	APPROVED BY	SOONG CC		



AMCON (HK) SALES & SERVICE PTE LTD
(2382511)