

# SIGHT GLASS

Chiller Manufacturer • HVAC & R Expert • Process Cooling Specialist



## TECHNICAL PARAMETERS

Applicable Refrigerant:	HCFC or HFC
Applicable Medium Temperature:	-40~ +80°C
Max. Operating Pressure:	4.5MPa
Max. Allowable Pressure:	6.8MPa
Yearly Leakage of Refrigerant:	≤2g R22/a

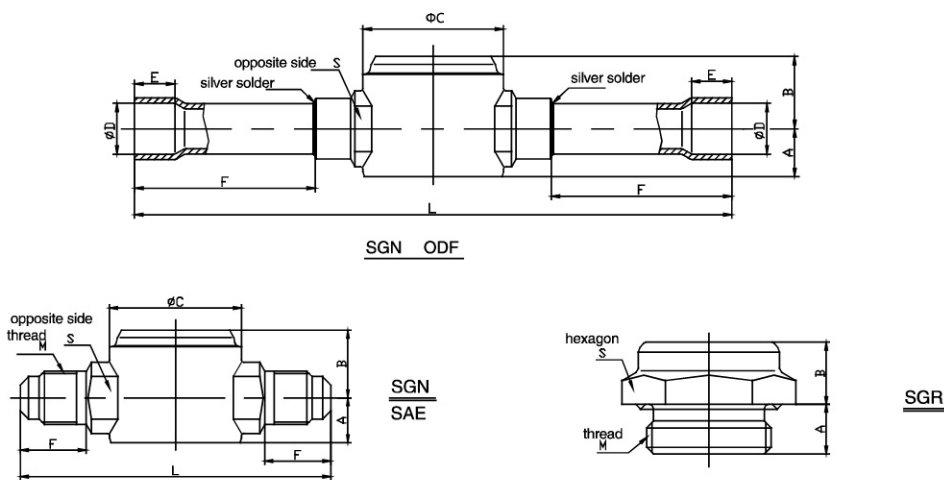
Note: For the fully enclosed compressor, generally the allowable water cut is in a range 30~75ppm, but for other types of compressor, the water cut will be higher slightly. For an effective protection, it is necessary to monitor the indicator carefully and replace the drier immediately if the color is changed into yellow.

PART NO	DESCRIPTION	Size	Connection
SIGHT GLASS 1/4"	1/4" SIGHT GLASS - 1.0hp - 1.5hp	1/4 (Φ6)	Thread
SIGHT GLASS 3/8"	3/8" SIGHT GLASS - 2.0hp - 5.0hp	3/8 (Φ10)	Thread
SIGHT GLASS 1/2"	1/2" SIGHT GLASS - 5.0hp - 10.0hp	1/2 (Φ12)	Thread
SIGHT GLASS 5/8"	5/8" SIGHT GLASS - 10.0hp - 15.0hp	5/8 (Φ16)	Thread
SIGHT GLASS 3/4"	3/4" SIGHT GLASS - 15.0hp - 20.0hp	3/4 (Φ19)	Thread
SIGHT GLASS 7/8"	7/8" SIGHT GLASS - 20.0hp - 40.0hp	7/8 (Φ22)	Weld

## CORRELATION BETWEEN WATER CUT AND COLOR

	Water Cut (ppm)					
	25°C			43°C		
	Green/DRY	Medium Color	Yellow/WET	Green/DRY	Medium Color	Yellow/WET
R22/R502	<30	30 ~ 120	> 120	<50	50 ~ 200	>200
HFC-134a	<30	30 ~ 100	> 100	<45	45 ~ 170	>170
R404a	<20	20 ~ 70	> 70	<25	25 ~ 100	>100
R407c	<30	30 ~ 140	> 140	<60	60 ~ 225	>225
R507	<15	15 ~ 60	> 60	<30	30 ~ 110	>110

## STRUCTURE



PART NO		A	B	ΦC	ΦD	E	F	L	S	Thread M	Weight (g)
											SGN
SIGHT GLASS 1/4"	ODF	9.5	14.5	28	6.5	7	27	102	14	-	105
	SAE	9.5	14.5	28	-	-	14	64	14	7/16-20UNF	145
SIGHT GLASS 3/8"	ODF	12.5	16.5	28	10.1	8	36	119	14	-	110
	SAE	12.5	16.5	28	-	-	17	70	19	5/8-18UNF	215
SIGHT GLASS 1/2"	ODF	13	18	28	12.8	10	46	146	19	-	170
	SAE	13	18	28	-	-	19	70	22	3/4-16UNF	240
SIGHT GLASS 5/8"	ODF	15	20	31.5	16.1	14	46	152	22	-	190
	SAE	15	20	31.5	-	-	20	80	24	7/8-14UNF	350
SIGHT GLASS 3/4"	ODF	18	23	31.5	19.1	16	51	167	24	-	270
	SAE	18	23	31.5	-	-	23	90	29	1-1/16-14UNS	545
SIGHT GLASS 7/8"	ODF	16.5	21.5	31.5	22.3	17	54	173	27	-	315