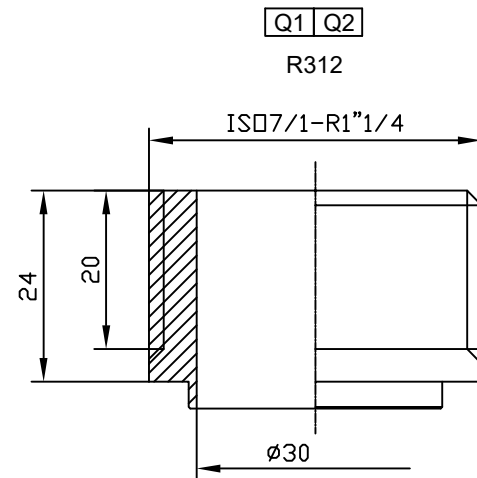
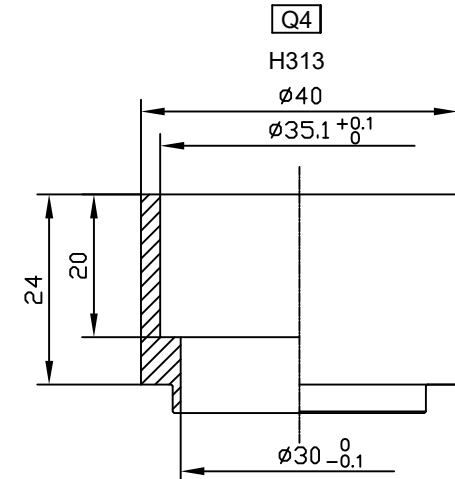
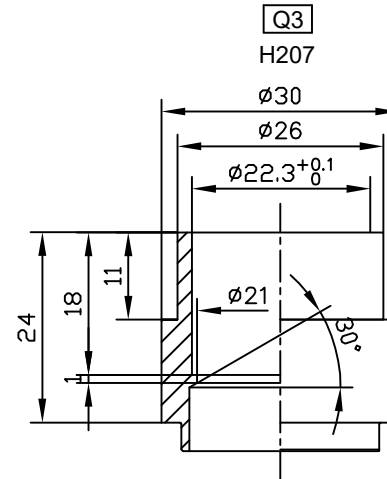
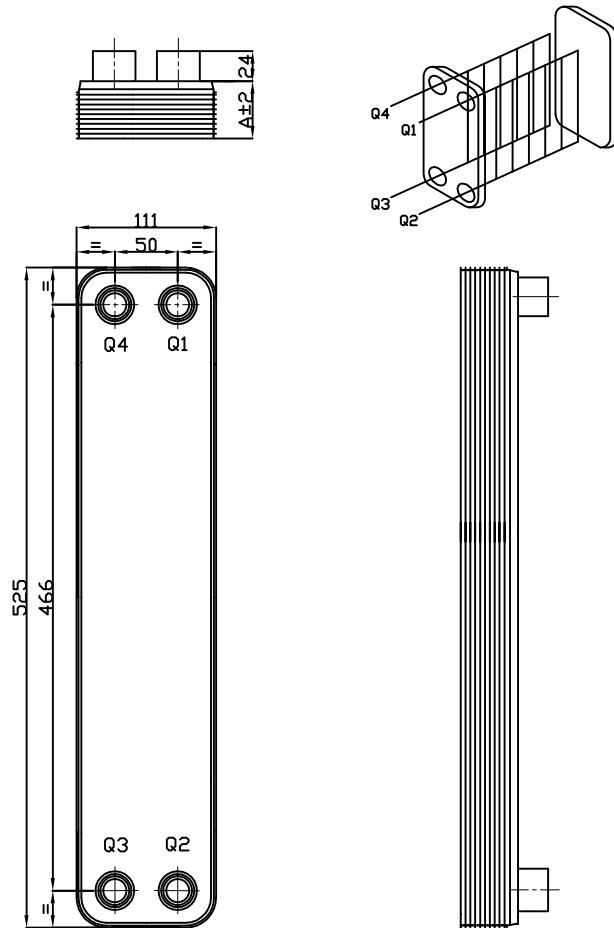


AM52A-68D



Chiller Manufacturer • HVAC & R Expert • Process Cooling Specialist



Number of Plates	68D	
Plate Thk (A)	172	
Design Pressure (MPa)	3.0	
Testing Pressure (MPa)	4.5	
Working Temp (°C)	-160~+200	
Q1	R1"1/4	
Q2	R1"1/4	
Q3	28.7	
Q4	35.1	
H1		
H2		
H3		
H4		

MODEL : AM52A-68D-3.0(H207-Q3,H313-Q4,R312-Q1-Q2)